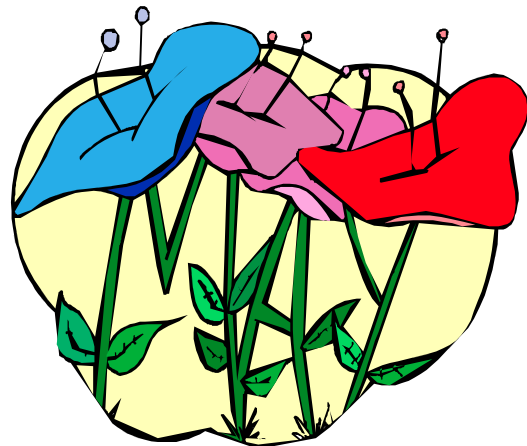


MAY 2010



A Stephen Series Congregation  
TIME DATED MATERIAL



The newsletter of Wallingford  
Presbyterian Church

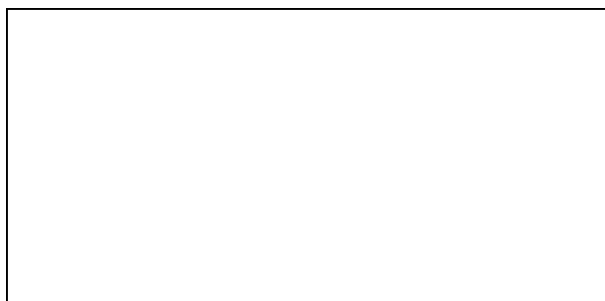
Wallingford Presbyterian Church  
110 E. Brookhaven Road  
Wallingford, PA 19086

Phone: 610-566-1644  
Fax: 610-892-0558  
E-mail: office@wallingfordpres.org

We're on the Web  
[www.wallingfordpres.org](http://www.wallingfordpres.org)

Non-Profit  
Organization  
US Postage Paid  
Media, PA 19063  
Permit #6

ADDRESS SERVICE REQUESTED



Pastor
<b>Rev. Dr. Suzan Hawkinson</b>
Associate Pastor
<b>Rev. Rob Ross</b>
Pastor of Visitation
<b>Rev. Kenneth A. B. Wells</b>
Parish Associate
<b>Rev. J. Barrie Shepherd</b>
Director of Music
<b>Elizabeth Braden</b>
Administrative Secretary
<b>Susan Schwarz</b>

May 2010

The newsletter of Wallingford  
Presbyterian Church



# Spirit Song—May

## From the Pastor's desk....

### May is a time of celebration

*"Every new beginning comes from some other beginning's end."* -

Semisonic

*"Unless a grain of wheat falls into the earth and dies, it remains just a single grain; but if it dies, it bears much fruit."* -

Jesus

One of the characteristics that unites all humanity is the need to mark transitions. There are several times a year when we recognize transitions, but, for our community, I think that the end of the school year, celebrated the end of May through the end of June, is the most significant annual transition.

May and June are filled with countless transition-markers: end-of-year concerts, sports banquets, graduation parties, and award ceremonies. Whether they are for friends, our children, or our grandchildren, each event commemorates the end of something that for a period of time defined who we were. We experience sadness according to the degree to which are losing a community that was meaningful and important to us. This is why the teary-eyed, speeches of graduating seniors appear overly dramatic...until we are the seniors.

These end of the school year transitions are important, not only in their own right, but also because they are miniature versions of what we will experience the rest of our lives - moving out of a community and facing a future without that community, without those things and people which previously defined us.

The day we move out of our parents' house, the day we graduate from college, the day we marry, the day our first child is born, the day we are fired from our job, the day we retire, the day our parents' die, the day our marriage ends, the day we die. Each of these days, be they happy or sad, represent powerful and scary transitions out of a community that had, to that point, defined us.

As we face the transitions in our lives, some find comfort with the thought that every great community, began with the dissolution of the community that came before it. But, for me, that is not enough. What of the transitions where you say, "I don't care how good the next community is, I want the last one." What of the transitions where you don't know if there will be another community? What of death?

At those times, I need my faith. I need to be reminded that all of the transitions in my life are leading to the ultimate transition, from this life to the next, when, "God will wipe every tear from our eyes. There will be no more death or mourning or crying or pain, for the old order of things has passed away" (Revelation 21). I need to be reminded that there is nothing truly good that I can lose in this life that I can't find in the next. And I need to be reminded that, since transition is inevitable, the question is not, "how do I avoid transition?" The question is, "how do I move through this transition in a fruitful way? A few days before he was killed, Jesus told his disciples that "unless a grain of wheat falls into the earth and dies, it remains just a single grain; but if it dies, it bears much fruit" (John 12:24). As we try to look at life from the other side of resurrection, the question is

not whether transitions will come, but what fruit will we bear as we go through them?

*Pastor Rob*

## Summer Worship and Sunday School to begin on May 30th

On Sunday, May 30th, we begin our summer worship and education schedule:

- 9 am: Adult Education (Doubts and Questions)
- 10 am: Worship
- 10 am: nursery care for children birth-2 years old
- 10 am: Summer Sunday School for children 2-10 years old
- 11 am: Coffee hour

At 10 am, all children, two years old and older, begin in the sanctuary with their parents. After the "Time with Young Disciples," children, two to ten years old, leave the service for Summer Sunday School. Parents can pick their children up after the worship service in the Reception Room.

# MONTHLY OPPORTUNITIES

## Presbyterian Women of Wallingford

### Working on Wholeness—WOW

All the women of the church are welcome and encouraged to participate in PWW activities. Circle Meetings are a great place to meet other women from the church for a time of fellowship. Here is the schedule of meetings for May.

**Sarah** Wednesday, May 12th at 6:00pm for a potluck dinner at the home of Chris Dearnaley.

**Miriam & Martha** Thursday, May 6th at 11:00am at the church for brief meeting and then lunch at the home of Dolores Thomas.

**Missions Project for the Spring** – We are asking individuals or groups to make monetary contributions to purchase items to assemble Baby, Health, and School kits for Church World Service. Kits are valued as follows: Baby Kits are \$39; Health Kits are \$11; and School Kits are \$13. Checks should be made out to PWW and marked “Church World Service Kits.” Contributions can be sent to the Office to the attention of PWW. The deadline for contributions is May 9th.

**WOW Mission Breakfast on Saturday, May 15th** – Join us on Saturday morning at 9:30 for a continental breakfast and then stay to help assemble the Mission Kits for Church World Service. We’ll be putting together the items for the Baby, Health, and School kits. Make plans to join us for our end of the year **WOW** event.

## Caregivers Support Group

First Tuesdays, 7:00 PM  
Note **TIME CHANGE**  
May 4th

This month’s topic for those who care for others will be “Questions and Answers,” an open forum discussion led by our own Debbie George. Have you wondered if your feelings are similar to those of others? Do you have a need for specific kinds of support and don’t know where to look for help? Bring your questions and join our helpful discussion.

## Divorce Care Support Group

Second Tuesdays, 7:30 PM  
May 11th

Often, after months and years have gone by following a divorce, against your better sense, your heart begins to ache for new relationships. How do you move forward? Tonight’s discussion is for any and all who are considering taking steps to meet and enjoy new relationships after divorce. Led by Dr. Jeff Celebre, this topic is sure to help those who attend. Dr. Celebre is an effective counselor and therapist as well as faithful Christian.

## The Song of the Seed: Journaling Class

Third Tuesdays, 7:30PM  
May 18th

Guided by a devotional by Macrina Weiderkehr and led by Ann Hatfield this group provides a forum for folks to reflect in writing upon various scripture texts and to share their “gleanings” with each other. Get help seeing how God might be at work in your life, and help others see the same. Join us!

## United Nations Tour Our own Jessica Hawkinson will help to facilitate the tour!

&

Visit the Presbyterian UN  
office in New York City  
**Tuesday, May 11, 2010**

- Round trip to NY in charter motor coach with comfortable seating; restroom available.
- Tour of PCUSA UN Office with Jessica Hawkinson, PCUSA UN Office Associate.
- Lunch at the PCUSA UN Office.
- Presentations of important world issues by knowledgeable interpreters.
- United Nations Tour (General Assembly, Security Council, exhibits, gift shop).

The bus will depart from the church on the Mall at 8:00am and return by 8:00pm. The cost for the day of \$50 includes transportation, luncheon, tours and administrative fees (evening meal “on our own” en route home). For reservations, send check, payable to Presbytery of Philadelphia, to Betsey Radcliffe at Presbytery House, 2200 Locust St., Phil 19103, by April 26. More info: Rev. David V. Yeaworth (DandGYeaworth@Verizon.net).

# KIDS KORNER

Bible Word Search, Vol. I: Extracts from the Bible

## 14. Our Position in the Kingdom of God

- Aliens and Strangers on earth (Hebrews 11:13 NIV)
- Ambassadors for Reconciliation (2 Corinthians 5:20)
- Believers (1 Timothy 4:12, Acts 5:14)
- Born Again (John 3:3, 7)
- Brethern (Romans 8:29 KJV)
- Brothers (Romans 8:29 NIV)
- Children of God (Romans 8:16)
- Chosen and Ordained (John 15:16, 19)
- Citizens of Heaven (Philippians 3:20 NIV; Luke 10:20 TLB)
- Co-Heirs with Christ (Romans 8:17 NIV)
- Friends (John 15:14-15)
- Heirs of God (Romans 8:17)
- His Workmanship (Ephesians 2:10)
- Joint Heirs (Romans 8:17 KJV)
- More Than Conquerors (Romans 8:37)
- New Creatures (2 Corinthians 5:17)
- Saints (1 Corinthians 1:2)
- Saved (John 3:17)
- Soldiers of Jesus Christ (2 Timothy 2:3-4)
- Sons of God (Romans 8:23 NIV)
- Souls (1 Peter 3:20)
- Spiritual (Galatians 6:1)
- Strangers and Pilgrims on earth (Hebrews 11:13 KJV)
- Vessels unto Honor (2 Timothy 2:20-21)
- Victors (1 Corinthians 15:57)
- Workmanship (Ephesians 2:10)

Bible Word Search, Vol. I: Extracts from the Bible

C S L D B P V H M A D A D V S  
O Y A A C R I E E O A L B I N  
H J U V M R E L S I R I P C O  
E O T B E B E T G S R E I T S  
I I I A F D A A H R E N H O A  
R N R T H E C S T E I L S R R  
I T I A N M H H S U R M N O I  
N N P B I R I O O A R N A R C  
N I S E A E L R L N D E M E H  
E A Y L G G D D D E O O K U O  
V S T I A N R A I Z O R R Q S  
A U H E N A E I E I S R O N E  
E F A V R R N N R T A O W O N  
H M N E O T E E I I L Y U C T  
R Y L R B S W D F C L N T L D

Copyright 2010 © GIL PUBLICATIONS, www.BibleWordSearchPuzzles.com

## 14. Our Position in the Kingdom of God

ALIEN	CREATURE	SAVED
AMBASSADOR	HEAVEN	SOLDIER
BELIEVER	HEIR	SONS
BORNAGAIN	HONOR	SOUL
BRETHERN	JOINT	SPIRITUAL
CHILDREN	MORE	STRANGER
CHOSEN	NEW	THAN
CITIZEN	ORDAINED	VESSEL
COHEIR	PILGRIM	VICTOR
CONQUEROR	SAINT	WORKMANSHIP

# MUSIC MINISTRY

**MUSIC APPRECIATION SUNDAY:**  
On Sunday, May 23 we will celebrate Music Appreciation Sunday as we give thanks for all those who share their time and talents in this ministry each year. The Chancel Choir and Bell Choir will provide special music that morning. Join us that morning as we celebrate Pentecost and give thanks for our musicians.

**SUMMER TAIZE SERVICE:**  
Wednesday, July 21 @ 7:30 PM. If you missed the Taize Prayer Services in January and March, be sure to come this summer for an evening of prayer, song, and meditation. If you would like to be part of this ministry, we need singers and instrumentalists; an usher to help with lighting candles; and people to help with advertising and sanctuary set-up. If you'd like to help, please contact Liz. And if you have not yet come to one of our Taize services, you are encouraged to come and experience a wonderful, peaceful evening of prayer and music!

**SUMMER MUSIC:** All four Sundays in June there will be SUMMER CHOIR. This is open to all adults and youth who like to sing and have a gift for music. Each morning we'll meet in the choir room at 9:15 AM to prepare an anthem to sing at that morning's worship. You can come for one or all four weeks. During July and August, we are in need of volunteer singers and instrumentalists willing to provide music. If you're interested in either endeavor, just contact Liz for more information!

If you'd like to get involved in the Music Ministry, or for more information about any of these events, contact Liz Braden at music@wallingfordpres.org or by phone at 215-738-2227.

# MISSIONS

## APRIL SHOWERS HAVE BROUGHT MAY FLOURS!



The WPC Pantry Brigade will be collecting Flour items in May (pasta, breads, rice, cereals, etc.), following April's Shower collection of toiletry items. The items collected will be delivered to the City Team Ministry and Chester Eastside Ministries food pantries in Chester. Please deposit your contributions in the bin by the Christian Education wing entrance.

### THANKS FOR SHARING

As in past years, our congregation participated in our denomination's response during Lent to the One Great Hour of Sharing. This offering is used for: Disaster Assistance (including aid to Haiti following the earthquake), Hunger and Homelessness Relief, and the Self-Development of People.

This year's One Great Hour of Sharing theme was "Feed my Sheep," reminding us to care for God's children just as a shepherd cares for his sheep. Many thanks go to the shepherds of our congregation who loaned the church their sheep – big, small, black, white, and all well-loved – so that we could see our the flock of sheep on our sanctuary windowsill grow throughout the Lenten season as our contributions likewise grew.



Through a combination of the "fish" boxes and the offering envelopes, our church collected over \$5,300 for One Great Hour of Sharing! In recent years, Presbyterians have

contributed about \$10 million each year – thanks to you and others, a lot of sheep are being fed.

### A Growing Community

The Eritrean community continues to grow in the Philadelphia area. Another refugee family has recently arrived with the help of HIAS and Council, the resettlement agency that we partnered with in resettling Alawa and her two children. This newest refugee family consists of five members, including one young child. John Stauffer was able to join the team of people who greeted the family at the airport on April 13<sup>th</sup>. John also arranged to have an interpreter accompany him to facilitate communication, which helped to make the welcome very successful. While our church will not be directly involved with the support of these newest immigrants, it is wonderful to share in the joy of these people being able to leave the refugee camp in Ethiopia, and begin a new life in the United States. Moreover, as the Eritrean refugee community in our area grows, the Eritreans are better able to provide support to each other.

Meanwhile, we still await news of the final travel plans for Alawa's sister and her family. The delay in travel seems to stem from the health concerns with one of the children. We continue to pray for improved health and their eventual arrival. If you would like to learn more about the Eritrean Refugee Project, please contact John or Darleen Stauffer (610-565-5094), Walt Kaminski (610-565-5644), Chris Darr (610-874-2415), or Ann Hatfield (610-647-2422).

## Concerns/Celebrations of our Church Family

*We are one body in Christ...related to each other by the love of God between us. One of the ways that we celebrate our unity is by continuing to hold each other, especially those of us struggling, in daily prayer.*

### This month we prayed for:

- ♥ Alawa Lagi Gali, Marya, Natneal
- ♥ Eileen Berges
- ♥ Pat Masiano
- ♥ Pat Utzinger
- ♥ Mary Payne's mother, Elizabeth Payne
- ♥ Elsie Olson
- ♥ John Leet
- ♥ Mina Varney
- ♥ Ralph Parks
- ♥ Kate Whitehead



Our sympathy as a church family to the following:

- Holly Renegar and family on the recent death of her father, Robert N. Conley, Sr.
- Karen Barnes and family on the loss of her mother, Ina Dainis, 4/7.



### Stewardship reminder

As the summer months approach and our minds and hearts turn to the joys of travel and repose...let us all be sure to bring and keep our pledges up to date so that the Church will still be in good "working order" when we all return to the fall schedule! Don't forget that your pledge of support is part of what hold up the pillars of the presence of our church in Wallingford, PA!

## NOTES FROM SESSION

Members of session met with the following to approve membership in our church:

- Patricia Tillson
- Barry Walker and Michelle Walker
- Wynne Edelman and Charles Hammes

Also approved was the baptism of Pat Tillson and Sarah Hammes. The sacrament of baptism was held on March 21. The new members were received as members on that date.

The next meeting of session will be on April 26 to meet with the student commissioning class.

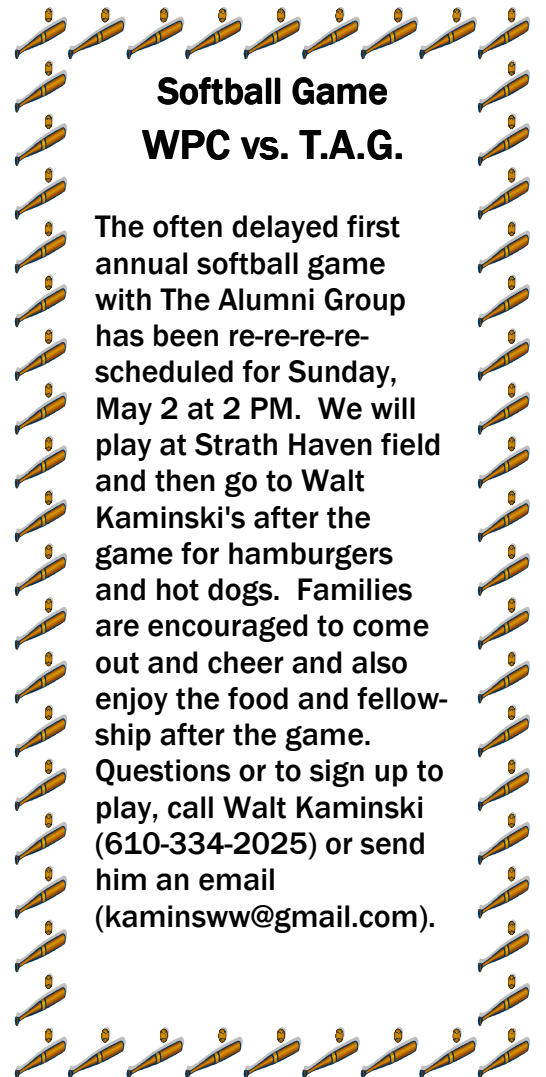
Barbara Meahl, Clerk

### MESSAGE FROM THE TREASURER

**Our income for the first quarter was above budget, and so the church was able to meet all its obligations and missions. Thank you for your generosity.**

## STRATEGIC PLAN -

Did you miss the Town Meeting about the Strategic Planning goals during a town meeting on March 21? Reports are available in the Fellowship Hall and the church office. A recording of the meeting is available on the church website at www.wallingfordpres.org. In order to keep everyone up to date as we begin to implement the plan, a "Strategic Plan" section has been added to the WPC website. Anyone interested in following what is being done or offering constructive criticism or help is encouraged to visit the site, read the information and comment as appropriate.



### Softball Game WPC vs. T.A.G.

The often delayed first annual softball game with The Alumni Group has been re-re-re-re-scheduled for Sunday, May 2 at 2 PM. We will play at Strath Haven field and then go to Walt Kaminski's after the game for hamburgers and hot dogs. Families are encouraged to come out and cheer and also enjoy the food and fellowship after the game. Questions or to sign up to play, call Walt Kaminski (610-334-2025) or send him an email (kaminsww@gmail.com).

## Trustees

The Trustees of WPC want to send sincere thank yous to the Boy Scouts of Troop 277 and the Cub Scouts of Troop 228 and their leaders and families for assisting us in the spring lawn cleanup on 4/10/10. We accomplished so much with your help and the gardens were looking beautiful by 12 noon!

Also thank you to the church members who came out to garden and rake with us. We really did accomplish a lot in 3 hours. There is always more to do so if you are able to come on 4/24 9a-12n we will be there with you!

## New Air Conditioners For The Sanctuary

Air conditioning is supplied to the Sanctuary by two compressor units and two air handlers. Each compressor and associated air handler provides cold air to either the left or right side of the Sanctuary. Early last Summer, it was discovered that the unit serving the left side of the Sanctuary was not blowing cold air. After evaluation by an HVAC contractor, it was determined that there was a leak in a coil assembly either in the compressor or air handler. To replace the coil in either unit would run into the thousands of dollars. Since the two units were 18 years old, the contractor's recommendation was not to invest any money into units that old. The Trustees agreed, and the determination was made to replace both units.

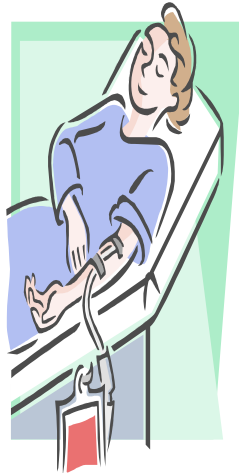
Fortunately, last Summer was not too warm and we made due with one unit running.

Bids were solicited and the decision was made to purchase two 7 1/2 ton A/C units and air handlers from F.C. Haab. The new units run on Puron, rather than Freon and are more environmentally friendly. The new units will be more efficient than the old ones, but are not the most efficient available. This decision was based on the fact that the additional cost of the more efficient units would never be recouped in electricity savings over the life of the units.

The units were installed April 6th thru 9th and stand ready to keep us cool during the hot weather that is soon to come. The cost of the removal of the old units and the installation of the new ones is \$18,212.00. This cost was paid for by the rental income generated by the Avondale manse. It is anticipated that the units will provide service for the next 20 years.

## Bloodmobile Wednesday, May 19 1:00-7:00PM

The Church will hold its spring blood drive on May 19 from 1:00-7:00PM. Sign up at coffee hour during the next three weeks or see a Deacon.



Please consider donating this vital gift to those who need it, and give a little time and a unit of blood. Put May 19th on your calendar! If you want to sign up online go to [www.pleasegiveblood.org](http://www.pleasegiveblood.org); click on "Make a Blood Donation Appointment" enter sponsor code 2076; follow instructions under Wallingford Presbyterian Church.

## Pentecost Offering

Each year, our church collects a special Pentecost Offering—this year on May 23, 2010. The offering provides a direct way to meet the needs of children at risk, youth, and young adults. Since 1998, Presbyterians of all ages have raised over

\$7 million for these ministries that benefit younger members of God's family. 40% of the offering is kept by congregations for use on behalf of children at risk. The General Assembly's portion (60 percent) provides leadership development opportunities for Presbyterian youth and young adults and supports children-at-risk programs at the national level.



## Children's News

### May Sprouts: 1st-5th grade Kookout at the Kelk's May 7th, 6-8:30 PM

Sprouts, the monthly fellowship and enrichment group for 1<sup>st</sup> to 5<sup>th</sup> grade students, will be having its final get together of the year on Friday, May 7<sup>th</sup>, 6-8:30 pm. We'll be meeting for longer than usual for our end of the year "Kookout at the Kelk's!" We'll eat hamburgers and hot dogs, play lots of outdoor games, cook our own s'mores, remember our fun year together, and say goodbye to our graduating 5<sup>th</sup> graders. Parents can drop their kids off at the church, and pick their kids up at the Kelk's house. As always, participation in Sprouts, including dinner, is free of charge. If you have any questions about Sprouts, please call or e-mail Rob (610-566-1644 ext 13 or [rob@wallingfordpres.org](mailto:rob@wallingfordpres.org)).

### Vacation Bible Camp 2010 Galactic Blast! July 25-30

Our Vacation Bible Camp, Galactic Blast, will run from Sunday, July 25<sup>th</sup> to Friday, July 30<sup>th</sup>, from 6-8 pm. All children 4 years old to graduating 5<sup>th</sup> grade are invited to participate with us. This is a great chance to invite those neighborhood children who have never been to WPC before!

It is also a great chance to join in and help teach the next generation about the love of God. We'll need high school students and adults to help with crafts, games, music, bible story telling and much more.

This year, at Galactic Blast, campers will blast off into outer space as they learn five stories about how God is amazing!

- We'll learn how God created the entire universe
- We'll learn how God never left

Elijah's side, even when he was scared and felt alone.

- We'll learn how God knew the Samaritan woman, even though she was different from everyone else.
- We'll learn how Jesus thought that a blind man on the road was important enough to stop and listen to, even when everyone else didn't care about the blind man.
- And finally, we'll learn that Jesus came back from the dead, showing that even death is no match for God's love and power!

Along the way, we will play exciting games, make memorable crafts (including t-shirts), sing catchy songs, and learn bible stories. The program costs \$10/camper (\$20 maximum/family), and scholarships are available to those who need them.

If you would like to register a child, you can find the registration form online ([www.wallingfordpres.org](http://www.wallingfordpres.org)) or in the church office. If you would like to volunteer to help (and we need lots of helpers!) please contact Rob by phone (610-566-1644 ext 13) or e-mail ([rob@wallingfordpres.org](mailto:rob@wallingfordpres.org)).

### Parents and Youth: News About Kirkwood Camp! It's Time to Register



Kirkwood Camp and Conference Center is Philadelphia Presbytery's neat "paradise in the woods," located at Stroudsburg in the Poconos.

**Summer Camp:** Kids entering grade 1-12 spend time as summer campers with other campers their age and with one or more counselors. Their

experience will include Bible study, worship, and outdoor activities. Kirkwood uses its own curriculum, written expressly for the needs of our campers.

### Summer Camp Programs this year include:

- **Beginners Camp** – This one-half week session is for those entering 2nd and 3rd grades.
- **Parent & Child Camp** for children entering 1st through 3rd grades – this 4-day, 3-night camp is ideal for the child that prefers to first experience camp with a parent or grandparent along. **Grandparents are encouraged to participate.**
- **Traditional Camp** – campers experience swimming, crafts, archery, low initiative challenge course, high ropes course, riding the rapids, Bible study, games, worship and campfires. This year we will have one **Night Owl Camp** for **Middle School** campers only.
- **Joy of Creation Camp** – This popular one-week session in August for grades 4-12 focuses on the creative arts.
- **Family Camp** – 4-day camps for the whole family in June and August
- **Counselor-In-Training Program** – 2-week course for youth finishing 11th Grade and 17 years old
- **Optional Stay-Over** weekend for July 3rd-4th
- **Day Camp** – for week days during the summer camping season

The Camp brochures are available at the Kirkwood web site, [www.kirkwoodcamp.org](http://www.kirkwoodcamp.org), where an on-line registration tool is available. Specific questions can be directed to the Kirkwood office at the Camp – 570 421-8625.

# Youth Happenings

## MS YOUTH GROUP

- 5/2 4-5:30pm Who are my brothers and sisters?
- 5/9 No Youth Group (Mother's Day)
- 5/16 4-5:30pm Family Game Night (entire family is invited!)
- 5/23 4-5:30pm Judge Not: What does it mean to live by the Golden Rule?
- 5/30 No Youth Group (Memorial Day Weekend)

## HS YOUTH GROUP

- 5/2 6-8:00pm What is Worship?
- 5/9 No Youth Group (Mother's Day)
- 5/16 6-8:00pm Family Game Night (entire family is invited!)
- 5/23 6-8:00pm Topic T.B.A.
- 5/30 No Youth Group (Memorial Day Weekend)



# Opportunities for growth & service

## Curious about Teaching Sunday School next fall?

Each year, a dedicated team of adults teaches the stories, values, and practices of the Christian faith to the next generation of Christians. Our teachers are the Sunday School program's greatest asset, and they have seen great success in the last year. (Year over year attendance is up over 50%!) Many of our teachers return to teach the next year. However, every year, we have a few teachers who decide that God is calling them in a different direction. Therefore, every year, we look to you, our congregation, to answer the call to teach.

– and you could be part of the team that teaches it to them. If you are considering teaching, or would simply like more information, please contact Pastor Rob at 610-566-1644 ext 13 or rob@wallingfordpres.org. Thank you for your consideration!

## Summer Sunday School Teacher Sign-up

Summer Sunday School begins on Sunday, May 30<sup>th</sup>. During the summer months, children aged 2-10, watch a 30 minute Christian-themed cartoon series called Friends and Heroes. The series is set back in the 1<sup>st</sup> and 2<sup>nd</sup> centuries, when Jerusalem was under Roman rule, and follows two kids Macky and Portia, as they try to live as Christians under Roman Rule. After watching the video, the kids make a craft, play a game, or have a short talk in response to the video.

To be a successful teacher here at WPC, you don't have to be a biblical scholar. We will provide you with training and a curriculum that will help you as you teach. In addition, you will be paired with another teacher (usually a returning teacher) each week, so that you two can work as a team together. The most important things to possess are a heart for kids, a willingness to learn, and an ability to be a part of a team. All the rest can (and will) be taught.

There are several different classes that are in need of teachers for the fall. At this time, we are looking for teachers in the: Pre-school class (with children aged 2 through 5), K-2<sup>nd</sup> Grade class (with children aged 5-7), 3<sup>rd</sup>-5<sup>th</sup> Grade class (with children aged 8-10)

Teaching Sunday school is a powerful way to shape the faith and life of the next generation of Christians. Our kids need to learn what we are teaching in Sunday School

# New Members Received

God is adding to the community of faith here at Wallingford Presbyterian Church! Our most recent members include:

Wynne Edleman and Charles Hammes, together with their daughter Sarah come to us from Media. Charles works as a software engineer and Wynne is trained in negotiation and project management. Sarah who is 10 was joyfully baptized in March!

Michelle and Barry Walker, together with their three children Liam, Meagan and Will are residents of Wallingford. Michelle is an attorney and Barry is an electrical engineer. They delight in their children who were baptized together in worship this past month.

Pat Tillson of Wallingford comes to us out of the Quaker tradition. She is a manager with Wharton Executive Education and seems to meet each day joyfully! Pat was baptized in worship as she made her profession of faith.

## Confirmation/Commissioning Journey Class to join the church on May 2nd

This year's CCJ group consisted of seven High School students, who have met together since January. They have spent their time learning about different aspects of their faith through discussion, journal writing, and even some art projects. They have discussed questions like, "Who is Jesus?" "What is sin?" "Why do we do things like worship together and read scripture?" and perhaps, most importantly, "How does all of this relate to the life of a High School student?" Through the process, they have been mentored by an adult from the congregation.

On April 26th, the students met with our session to share their statements of faith. After talking about what they believe with the session, they will join the church in Sunday morning worship on May 2nd. Please pray for our confirmands as they make final preparations for publically joining the church. Also, please plan to attend worship May 2nd, in order to welcome them as full members of our community.

### Sunday School Teacher Appreciation

#### May 17th

The Christian Education Council wishes to express our deepest appreciation for the amazing job that our Sunday School Teachers have done this year. Please join us in thanking them during worship and coffee hour on Sunday, May 17th. This year's teachers were:

Pre-k: Carol Maryon, Cathy Kilpatrick, Linda Osman, and Stephanie Leone

K-2nd grade: Colleen Borden, Debbie Ross, Donna Kokol, and Shelagh Iowa

3rd-5th grade: Gail Weaver, Gary Klein, Suzanne Quinn, and Tom Erickson

6th-8th grade: Amy Dewerth-Pallmeyer, Bob Kenworthy, and Russ Kinder

Adult: Frank Noyes, Walter Heindl

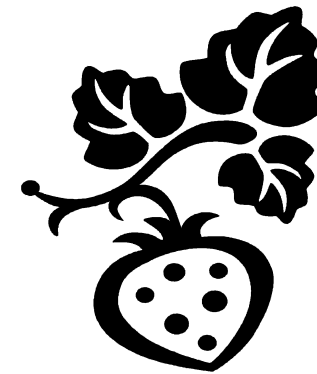


Exciting news! The Presbytery of Philadelphia is sponsoring a second One Joyful Choir concert on Saturday, November 13, 2010. The event will take place in Verizon Hall at the Kimmel Center in Philadelphia at 2:30 p.m. All choir members from all churches in our presbytery are invited to participate. Dr. Pearl Shangkuan from Calvin College will conduct, and well-known and respected composer John Ferguson has been commissioned to write an anthem that he will accompany. See Liz Braden, Director of Music, for the registration form, rehearsal schedule, and details.

The first One Joyful Choir took place in November 2007, with 450 people singing, making it the largest choir to ever perform at the Kimmel Center. The event proved to be a wonderful experience for all involved, and \$40,000 was raised for presbytery mission projects. Funds raised this year will be given to Hôpital Sainte Croix in Léogâne, Haiti, a long-standing project supported by PCUSA that is in desperate need of financial assistance following the recent earthquake.

People are also welcome to work on other committees, including fundraising, communications, logistics, and finance. Call Linda Deeter at 215-348-3890 for more information and to volunteer.

One Joyful Choir Concert Committee: Jeffrey B.Fowler, Minister of Music, Wayne Presbyterian (Chair); Nora Berlinger, Director of Music, Grace Presbyterian, Jenkintown; Jeffrey Brillhart, Director of Music and Fine Arts, Bryn Mawr Presbyterian; Chris Cherwien, Director of Music, Thompson Memorial Presbyterian; Dave Corson, Audio Technician; Linda Deeter, Doylestown Presbyterian (Producer); Dennis Elwell, Director of Music and Organist, Overbrook Presbyterian; Tim Evers, Associate Minister of Music, Wayne Presbyterian; Ethel Geist, Organist, Abington Presbyterian; Louise Gerdemann, Minister of Music, Gwynedd Square Presbyterian; Loretta Hartnett, Director of Music, Riverview Presbyterian; Bill Reinhold, Associate Executive for Mission Partnerships and Urban Ministry, The Presbytery of Philadelphia; David P. Sathra, Director of Music, Warminster Presbyterian; Jim Sredenschek, Director of Music, Aston Presbyterian



## STRAWBERRY FESTIVAL MONDAY, JUNE 7... 5PM TO 8PM

Hard to believe, but it's just weeks until the **Strawberry Festival** on June 7. The kick-off of the Church's summer season is here and we need everyone's help to make it a success!! The Festival will raise funds to be donated and it is a wonderful way to introduce your neighbors, friends or co-workers to our church's fellowship.

**Volunteers** If you are available, sign up at Fellowship Time in Fellowship Hall after services, or contact Leslie Krowchenko, 610-565-8723 or Leslie.krowchenko@comcast.net or Helen Picher 610-566-8958 or hpicher@comcast.net. The Festival is held from 5–8 p.m., but volunteers are also needed for preparation before and clean-up after the event. If you have the time, we'll find a way to use you.

**The Book Nook** Fiction and non-fiction for adults and children.. Drop them off in Room 1 **after May 16!** Please, only books in good condition, and no textbooks or encyclopedias!

**Plants** Demonstrate your green thumb and please note the plant's name, growing conditions (*shade or sun, etc.*) and *suggested price!* Drop them off **after services June 6 or the morning of June 7.**

**Attic Treasures** One of the festival's perennially popular booths. items may be dropped off in Room 1 **after May 16.**

**Cakes** We ran out last year so extra bakers are needed. Please drop them off in the kitchen **after services June 6 or the morning of June 7.**

**Ice Chests, Card Tables & Extension Cords** Please put your name on them and drop off **after services June 6 or the morning of June 7.**

**DON'T FORGET TO COME,  
EAT, BUY, PLAY SOME GAMES  
AND HAVE A GOOD TIME!**